

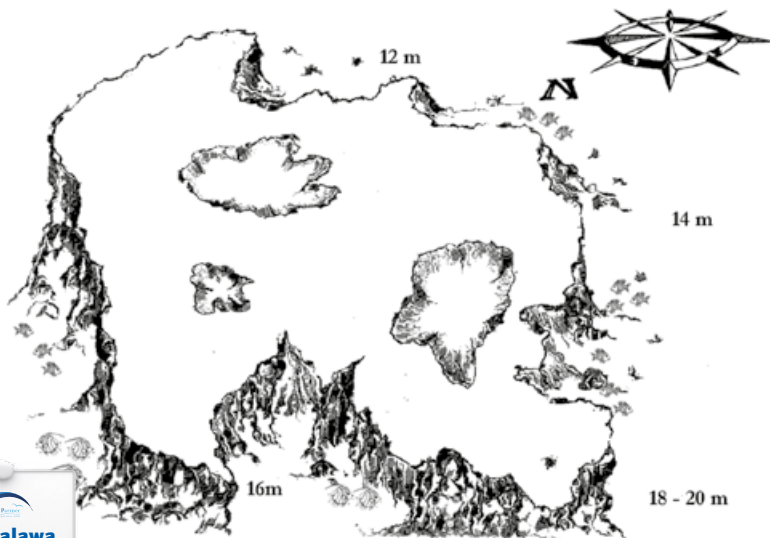
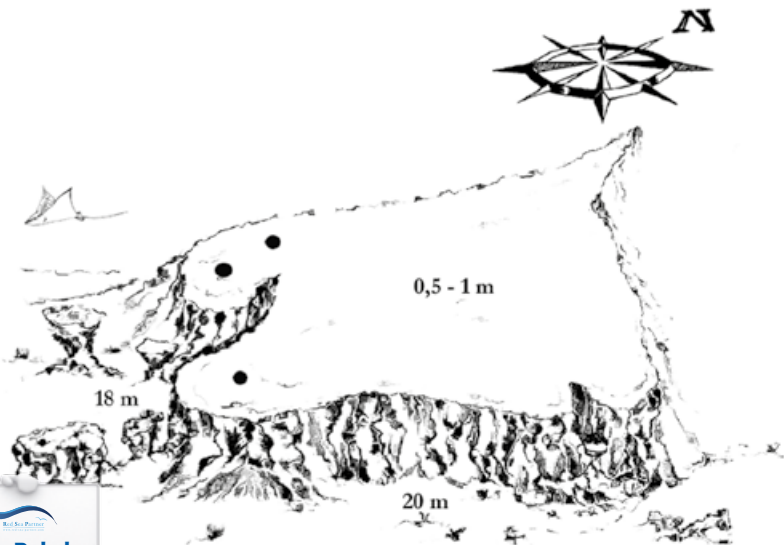
Detaillierte Satelliten-Übersichtskarte auf Seite 216!
For details see satellite overview-photographs on page 216!

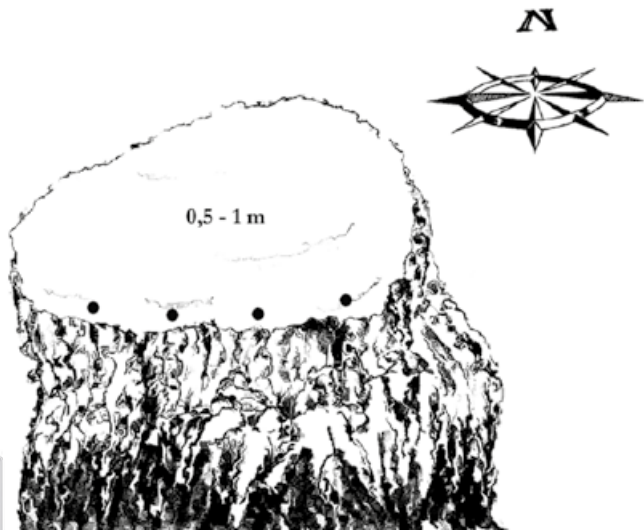
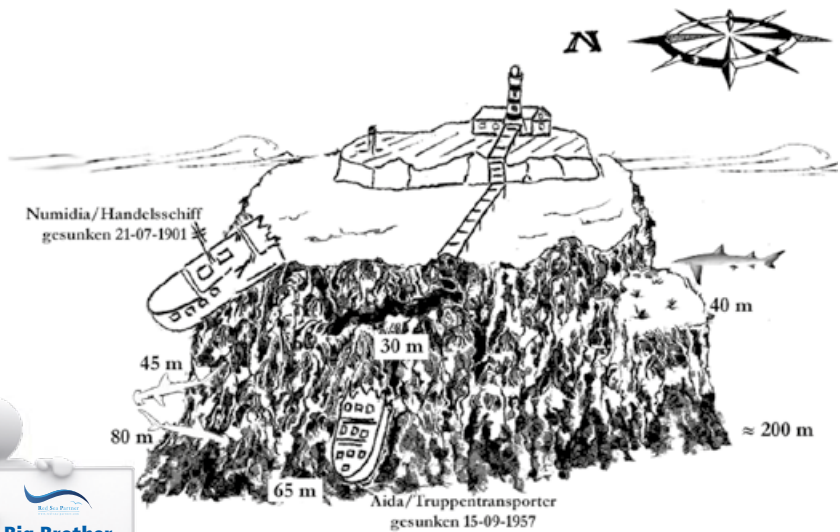
Red Sea South



Port Berenice





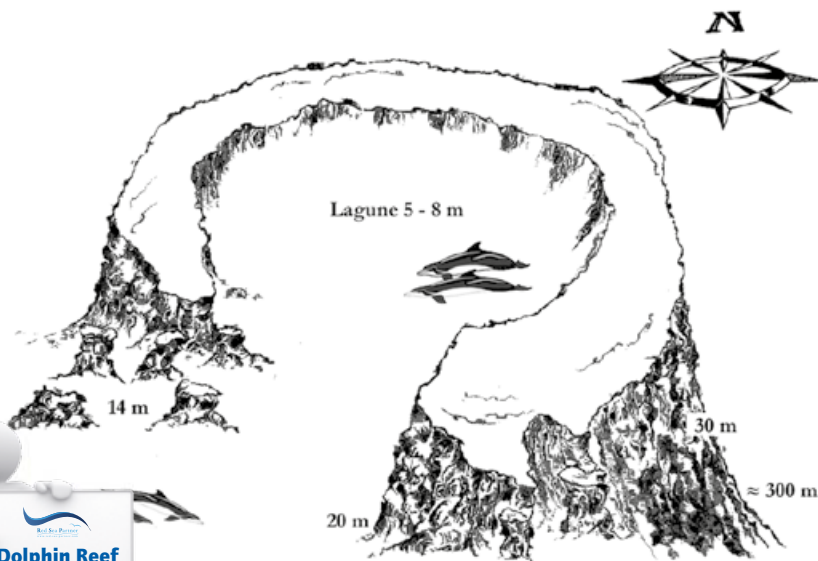


Westseite 7 - 35 m
große Ansammlung
von Seeanemonen
("Anemone-City")

Steilwand

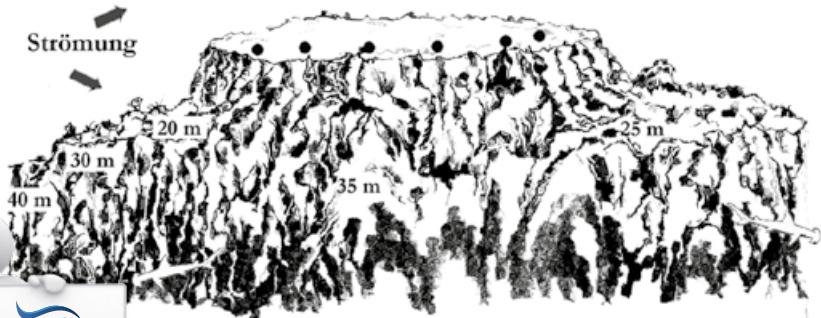
Steilwand

≈ 70 m

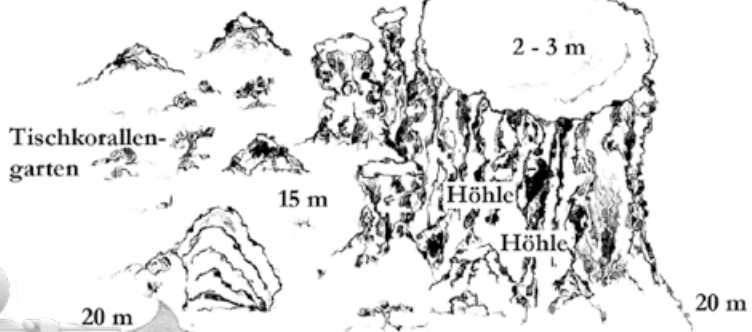




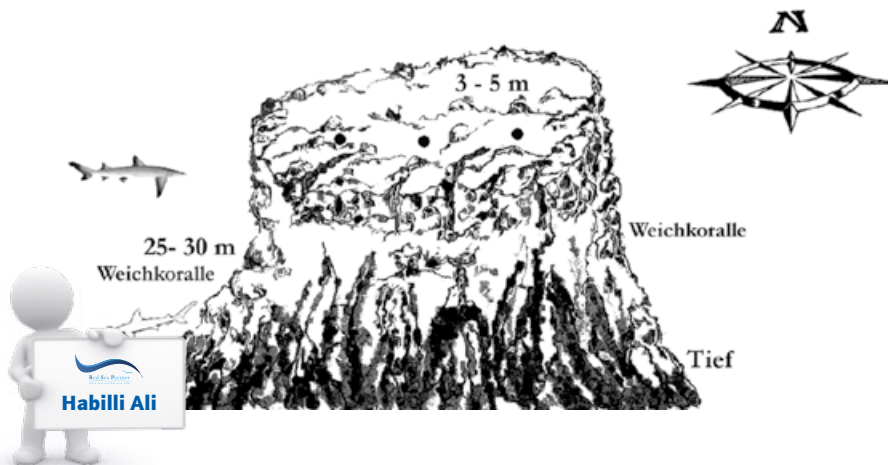
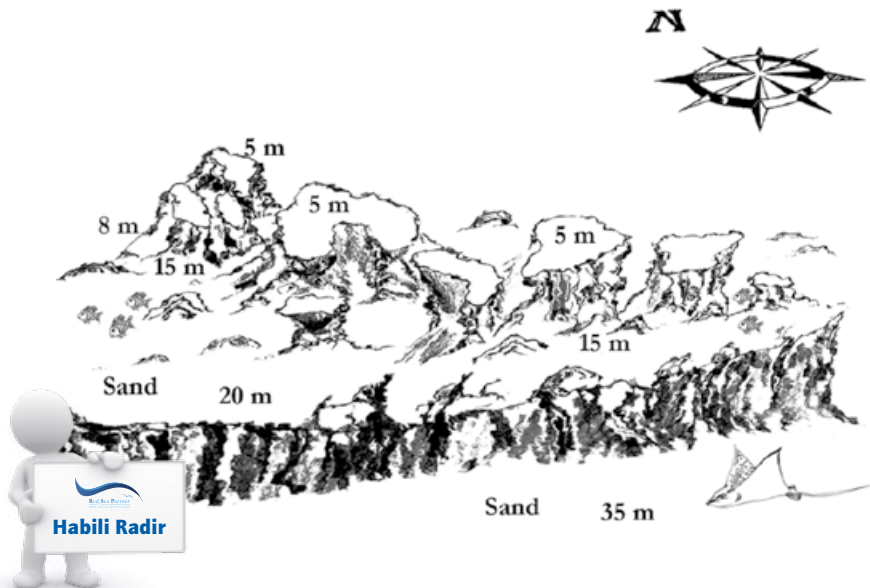
Strömung

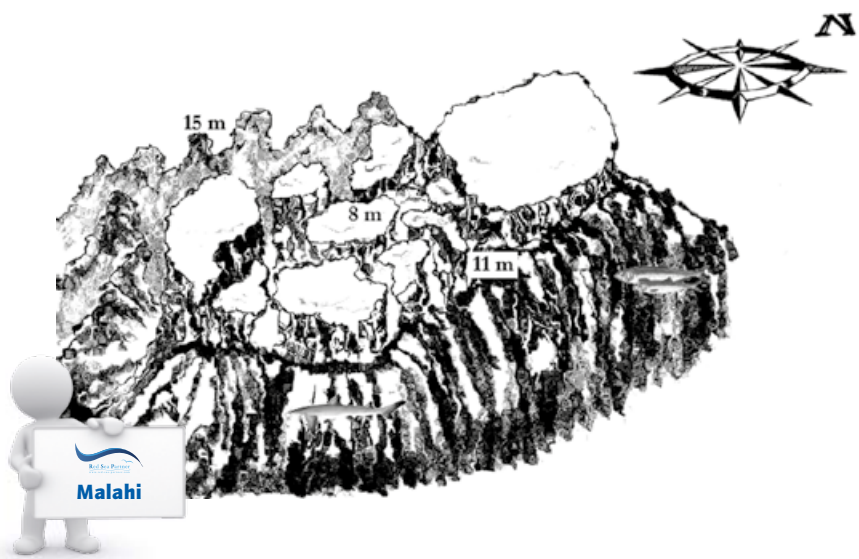
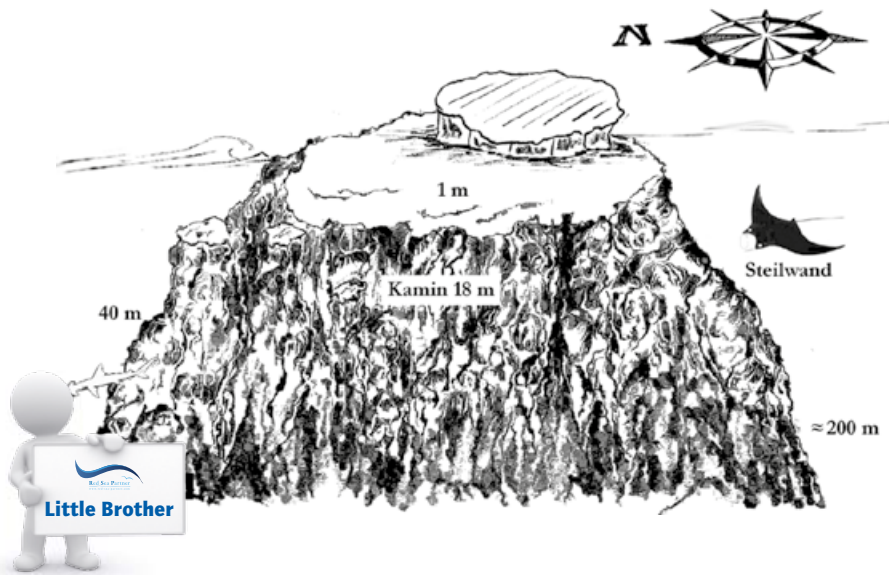


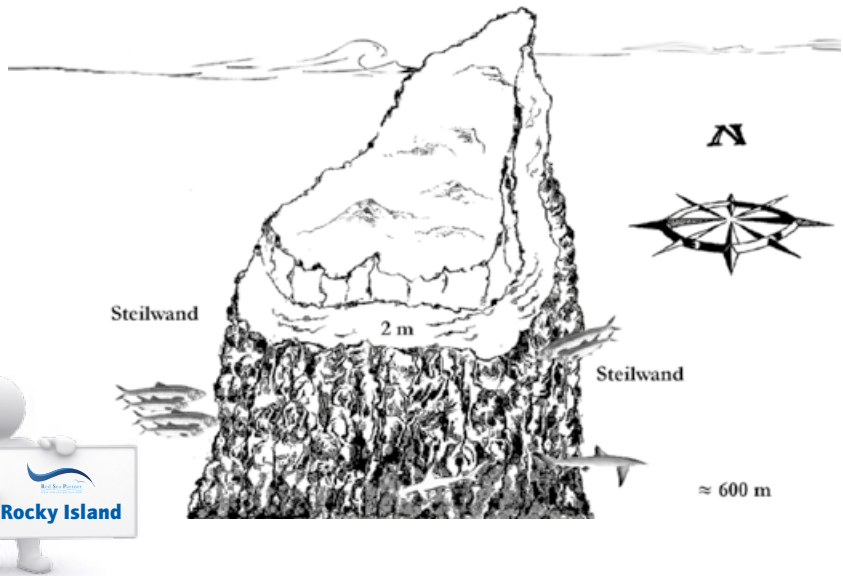
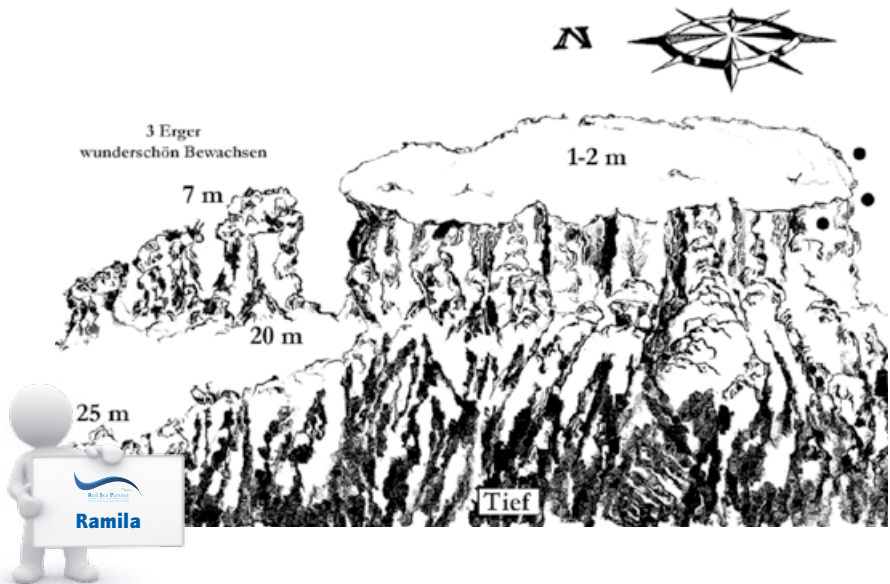
Elphinstone

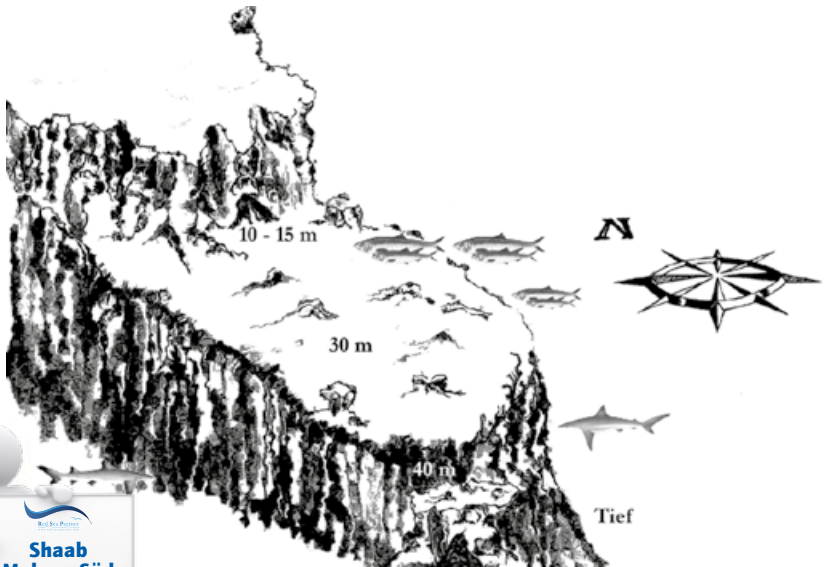
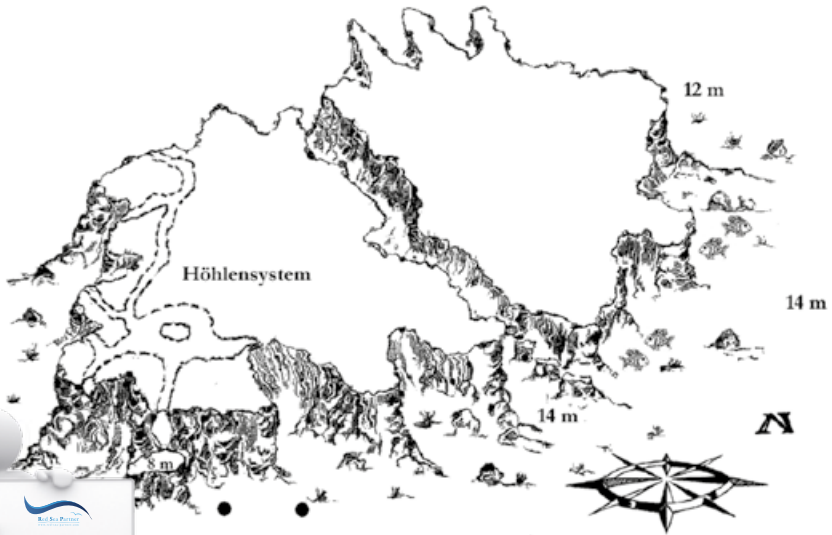


**Habibi
Marsa Alam**



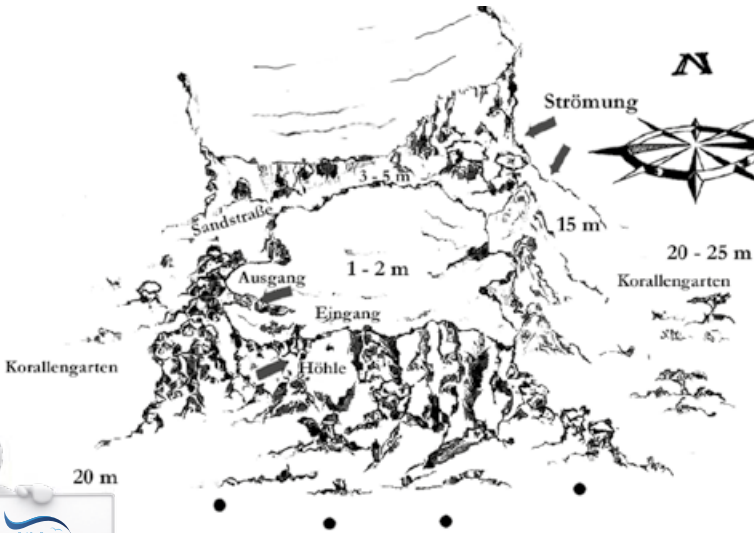




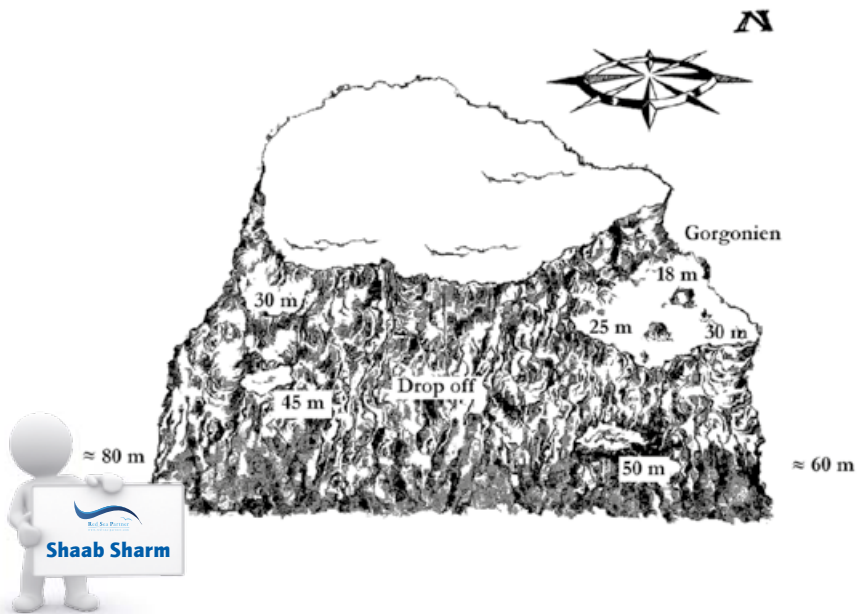




Shaab
Marsa Alam



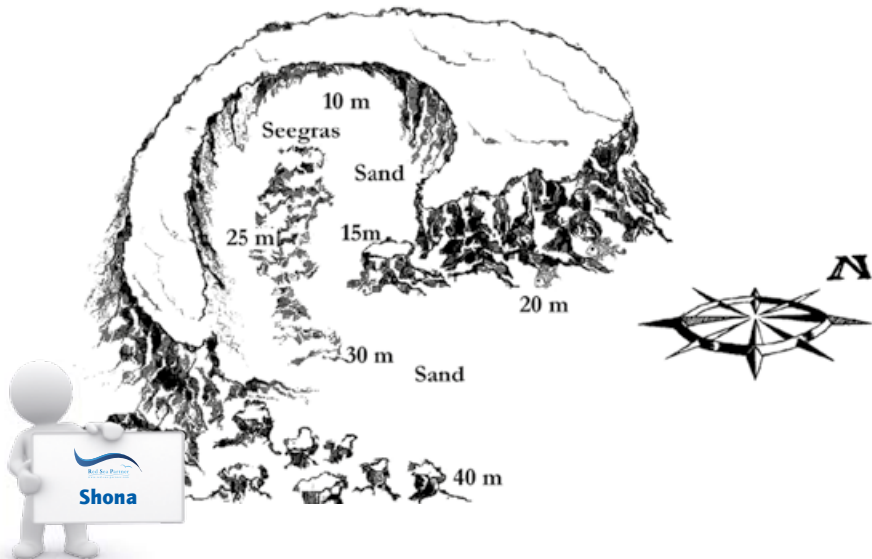
Shaab Sataya



≈ 80 m

Shaab Sharm

≈ 60 m



Shona

